



LEGAL SOCIALIZATION PROCESS OF EARLY ADOLESCENTS IN SAO PAULO, BRAZIL

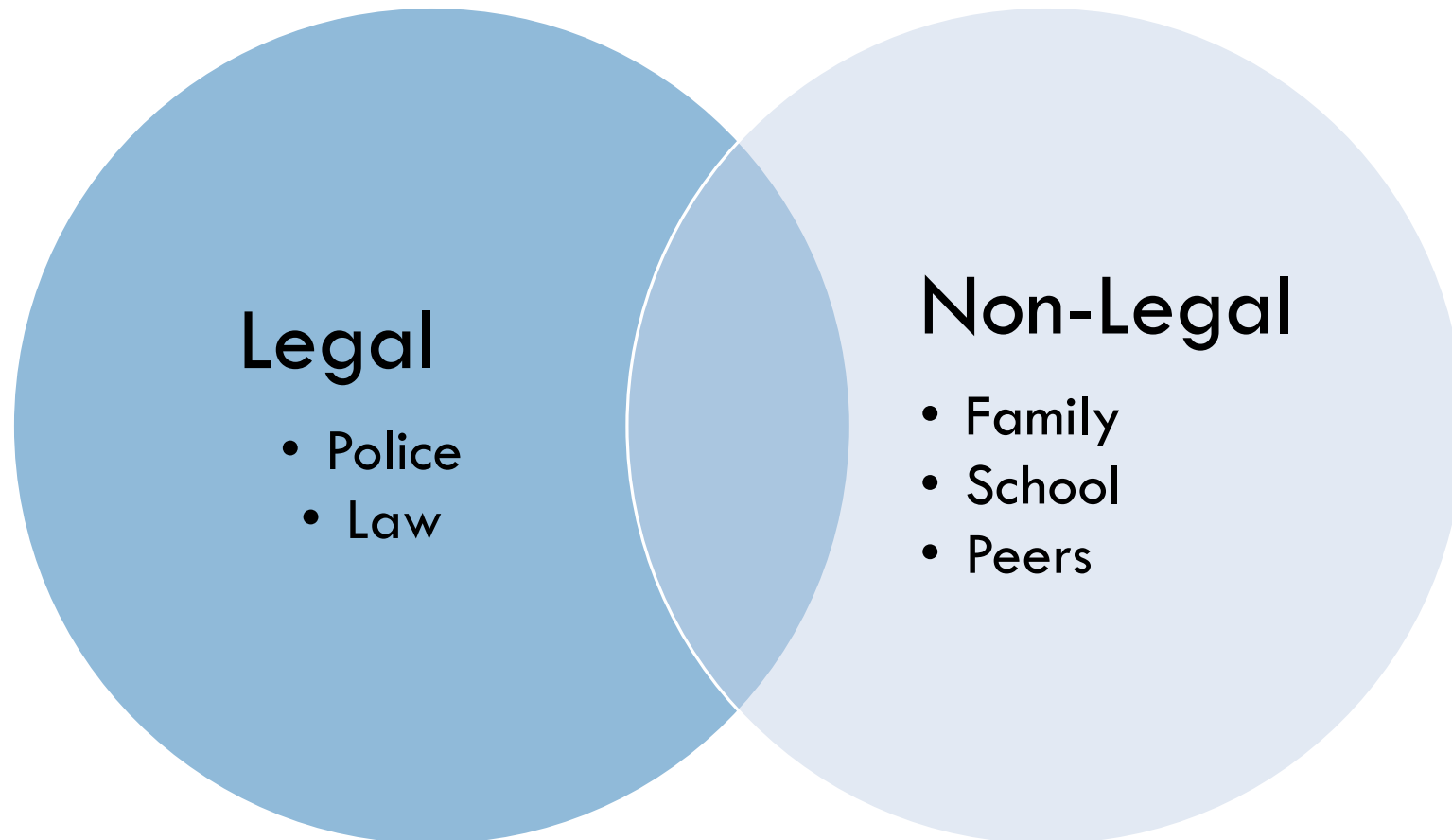
Third ISA Forum of Sociology
The Futures They Want: Bringing Children into Global Sociology
Vienna, Austria
July 2016



RESEARCH DESIGN

- Cohort longitudinal research with early adolescents born in 2005
- Time-lapse: 5 years (2016 – 2020)
- Data collecting tools:
 - Survey (sample $n = 800$)

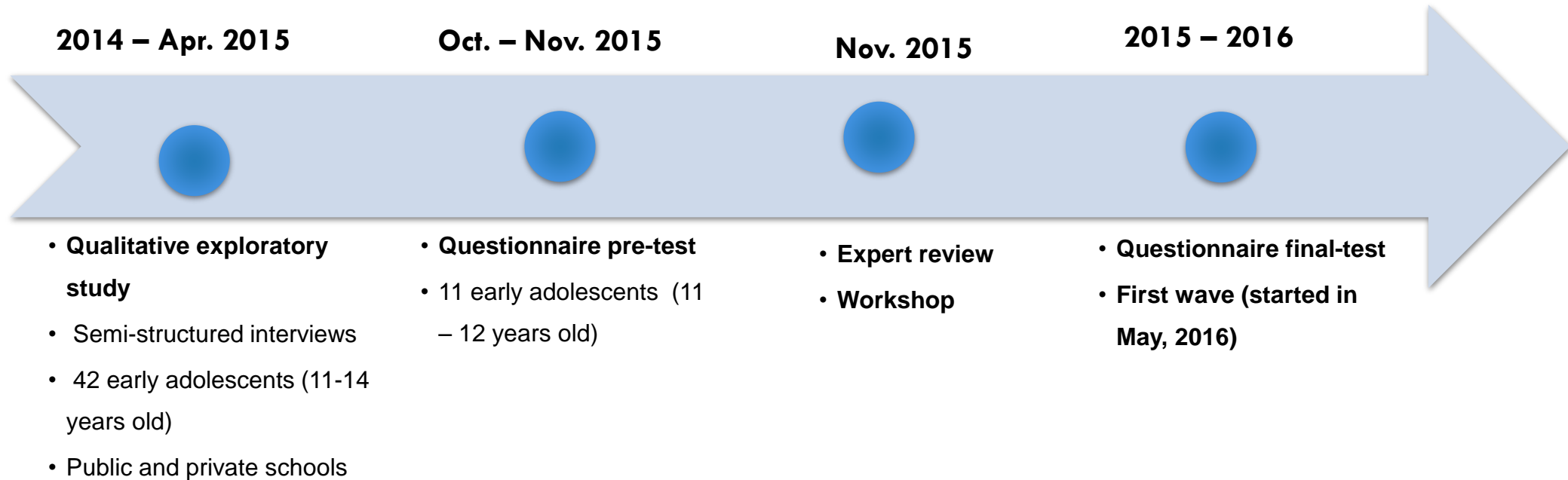
LEGAL SOCIALIZATION



OBJECTIVES

- Identify early adolescents perceptions, attitudes and behaviors on rules, laws and authority figures;
- Identify early adolescents experiences and interactions with legal and non-legal authorities (police, school, family, peers);
- Identify the impact of direct and indirect victimization of early adolescents over legal socialization.

RESEARCH DEVELOPMENT



QUESTIONNAIRE STRUCTURE

Profile



- Personal
- School
- Activities

Family



- Legitimacy
- Procedural Justice
- Victimization

Peers



- Moral alignment
- Bullying
- Rule violating behaviour

Teachers



- Legitimacy
- Belonging to school
- Victimization

Interpersonal trust



- Trustful relationship

Perception of Laws



- Functions of law
- Legal Cinicism
- RVB

Neighborhood (fear)



- Life in the neighborhood
- Victimization

Police



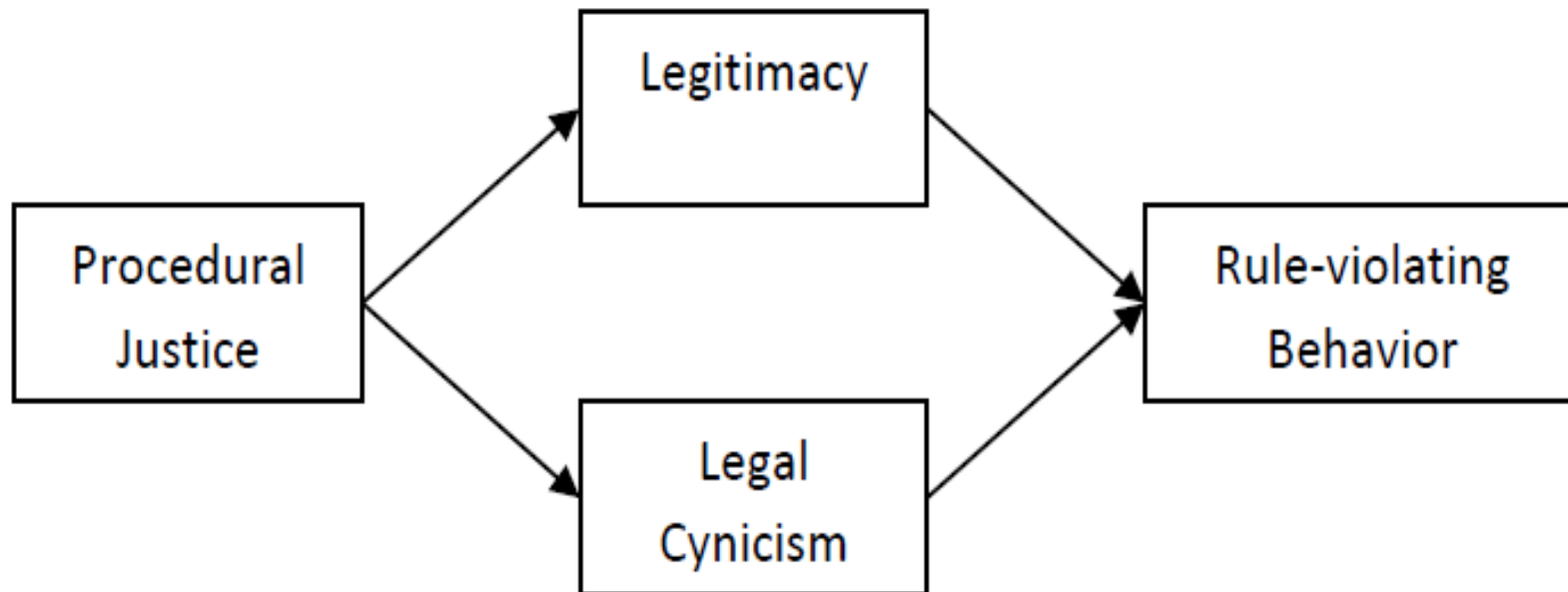
- Institutional trust
- Legitimacy
- Procedural Justice

Demographic profile

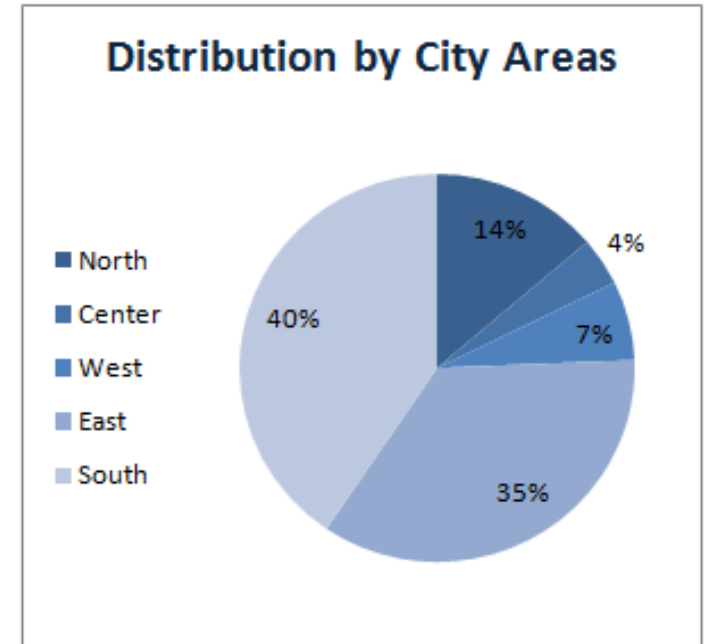
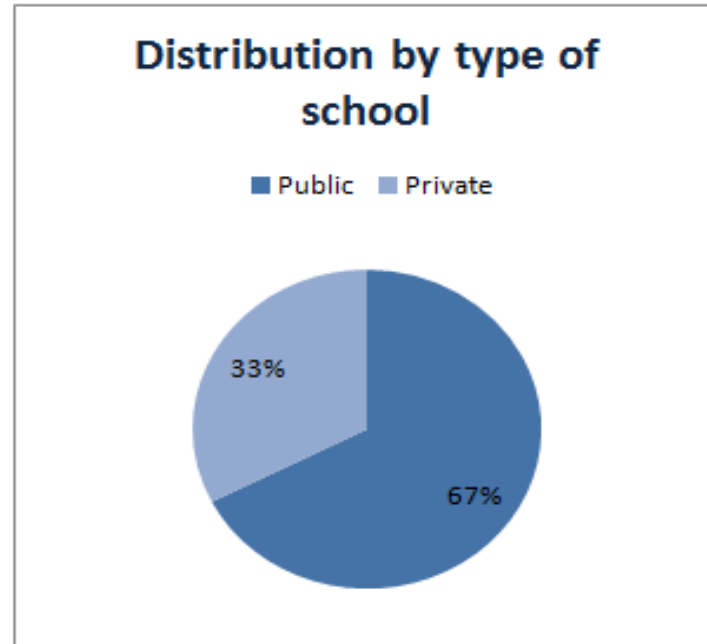
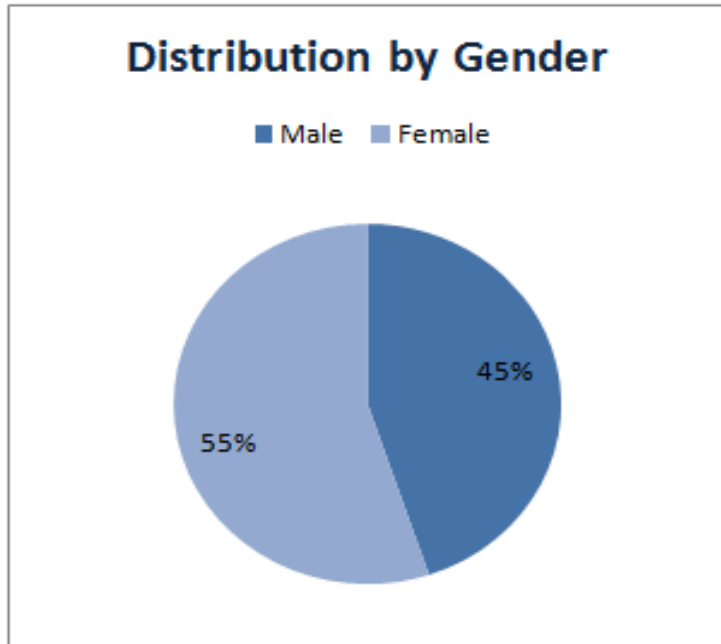


- Religion
- Race

LEGAL SOCIALIZATION BASIC MODEL

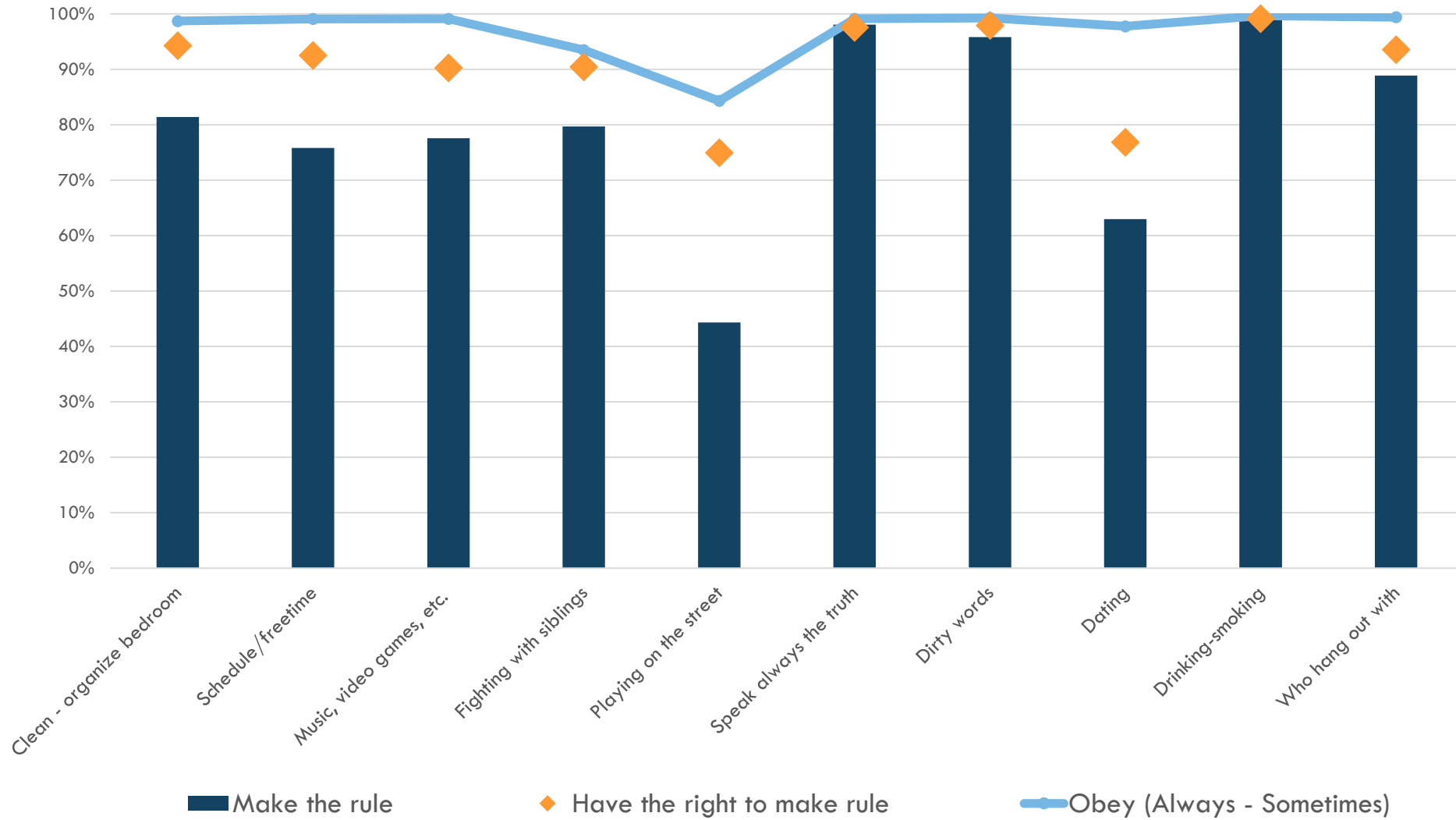


SURVEY OVERVIEW (PRELIMINARY)

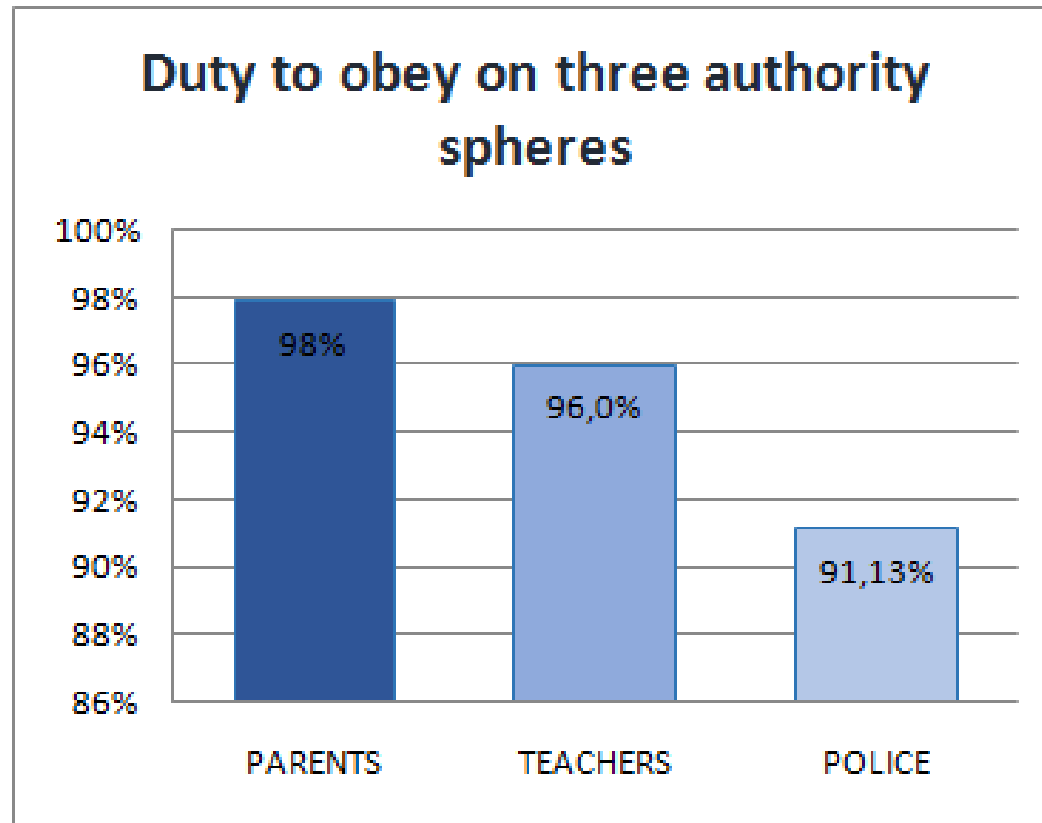


Sample $n = 575$

DATA OVERVIEW (PRELIMINARY)



DATA OVERVIEW (PRELIMINARY)



INEV

Center for the Study of Violence
University of São Paulo

